

2014-15 K-PREP REPORT

North Butler Elementary

Overall Score -- 67.8

72nd Percentile

Proficient/Progressing

ACCOUNTABILITY

Accountability Profile

The Accountability Profile summarizes the status of a school or district in the state accountability system, Unbridled Learning: College- and Career-Ready for All. The Overall Score is used to compare and rank school and district performance and to calculate an AMO improvement goal. An accountability classification based on the percentile rank, rewards or assistance category, participation rate and graduation rate are also displayed. Accountability is based on students enrolled a full academic year (100 days).

Last Updated Date: 09/23/2015

Accountability Performance

Level	Year	Overall Score	Percentile in Kentucky	Classification ¹	Rewards and Assistance Category ²
Elementary School	2014-2015	67.8	72	Proficient/Progressing	
	2013-2014	66.1	64		

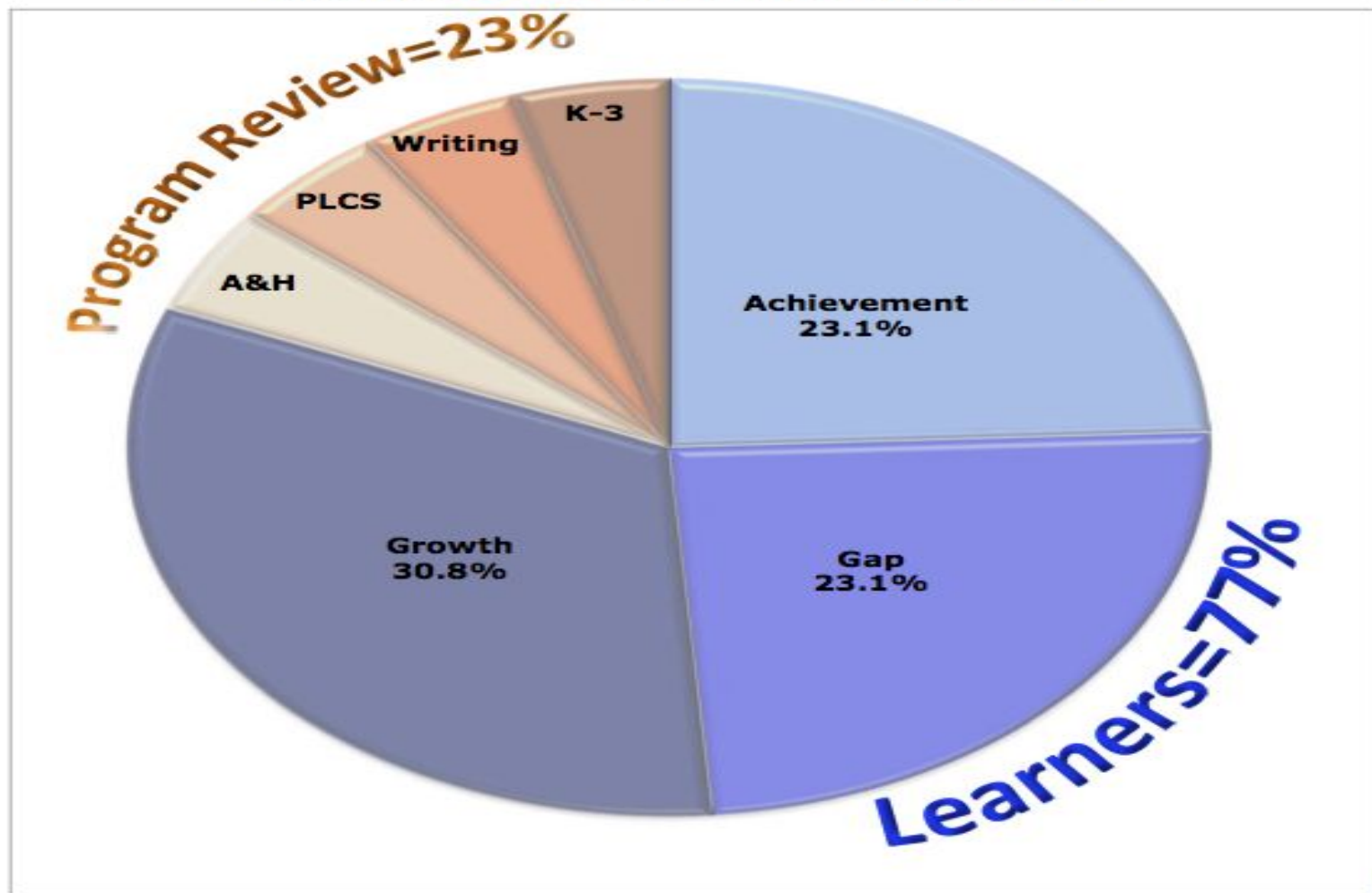
AMO

Annual Measurable Objective (AMO)							
Level	Year	Prior Year Overall Score	AMO Goal	Overall Score	Met AMO Goal	Met Participation Rate Goal	Met Graduation Rate Goal
Elementary School	2014-2015	66.1	67.1	67.8	Yes	Yes	N/A

Accountability Components						
Level	Year	Next-Generation Learners		Program Reviews		Combined Results
		Total Score	Weighted Score (Learners Total Score x 77%)	Total Score	Weighted Score (Program Review Total Score x 23%)	Overall Score (Learners Weighted Score + Program Review Weighted Score)
Elementary School	2014-2015	58.2	44.814	100.0	23.000	67.8
	2013-2014	58.1	44.737	92.8	21.344	66.1

Federal data required in addition to the ESEA approved Accountability Model

Where Your Overall Score Came From



**Overall 2015
Score: 67.8**

Percentile: 72 from SRC

Rank: 374 out of 712 Schools

School Classification

Proficient/Progressing

Rewards & Assistance Category

N/A

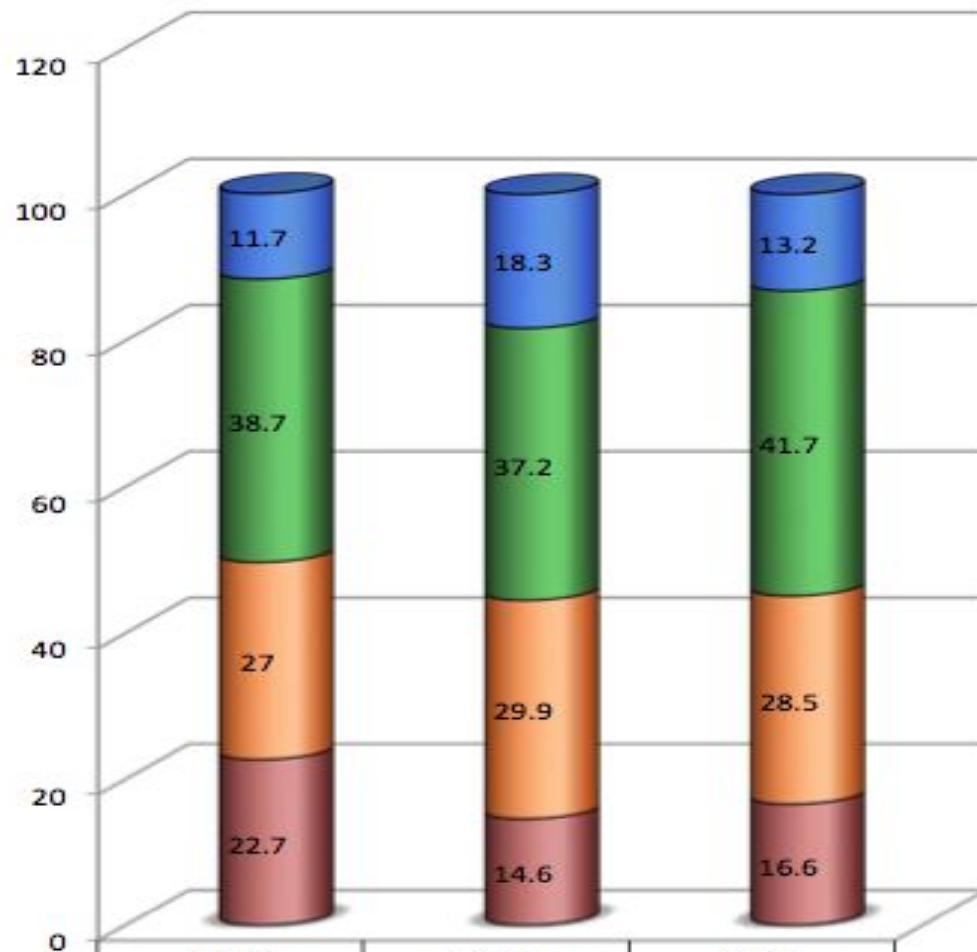
**2015 Annual Measurable
Objective (AMO) Goal:** 67.1

Did we meet our 2015 goal? Yes

**2016 Annual Measurable
Objective (AMO) Goal:** TBD

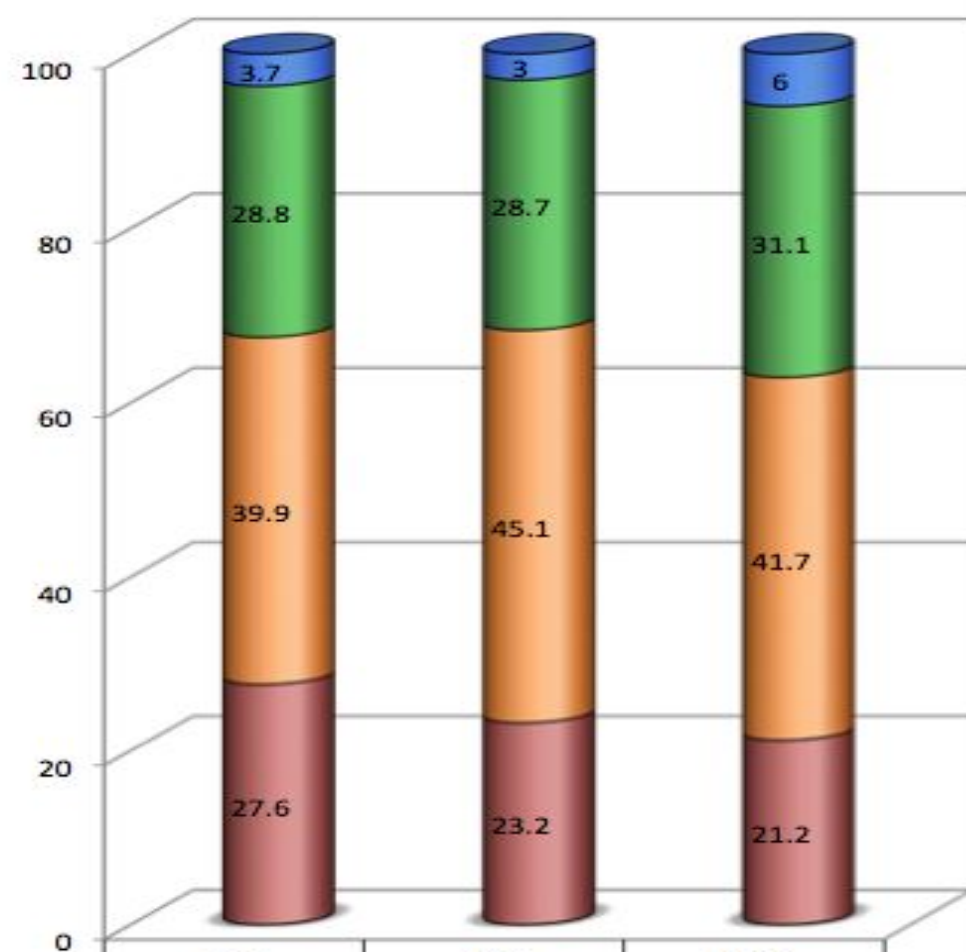


Reading



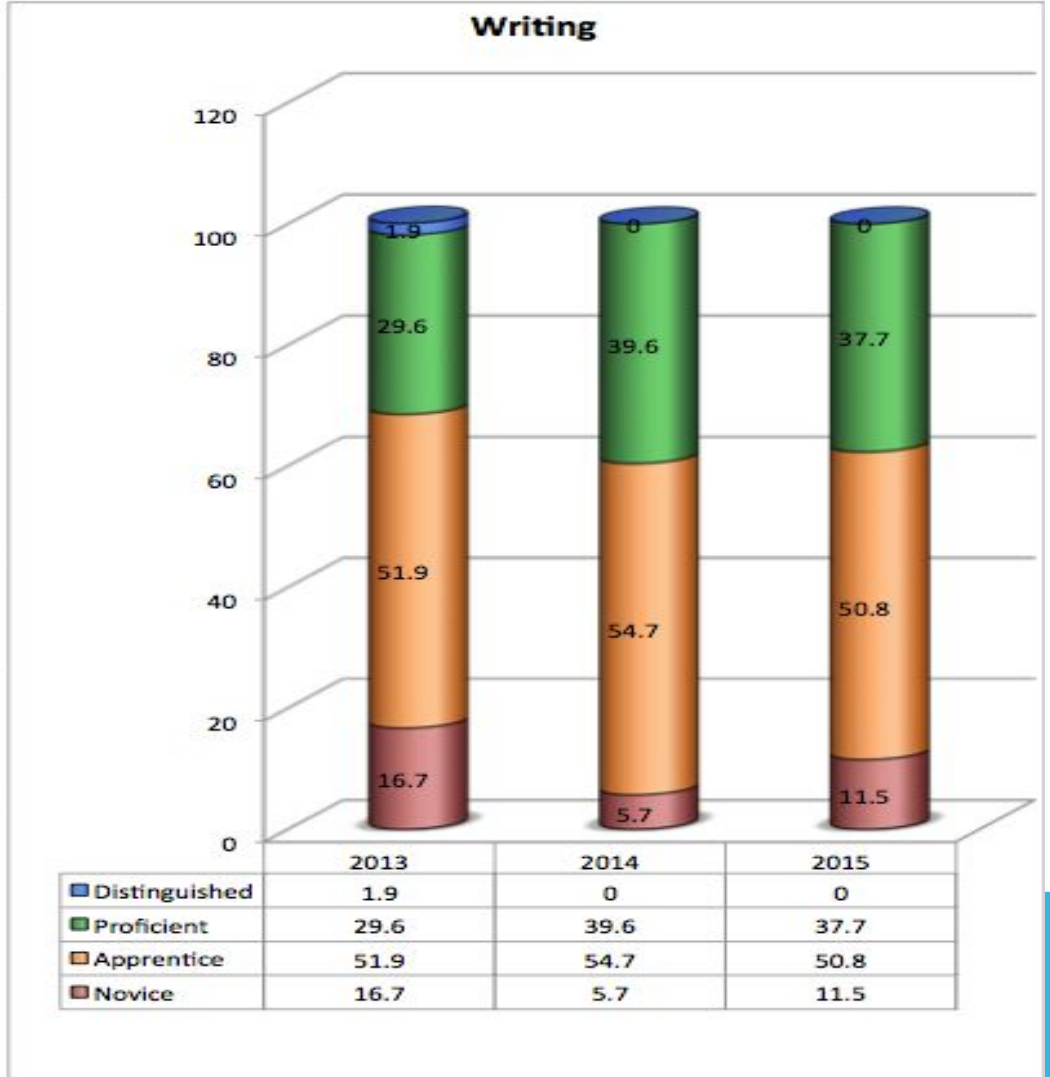
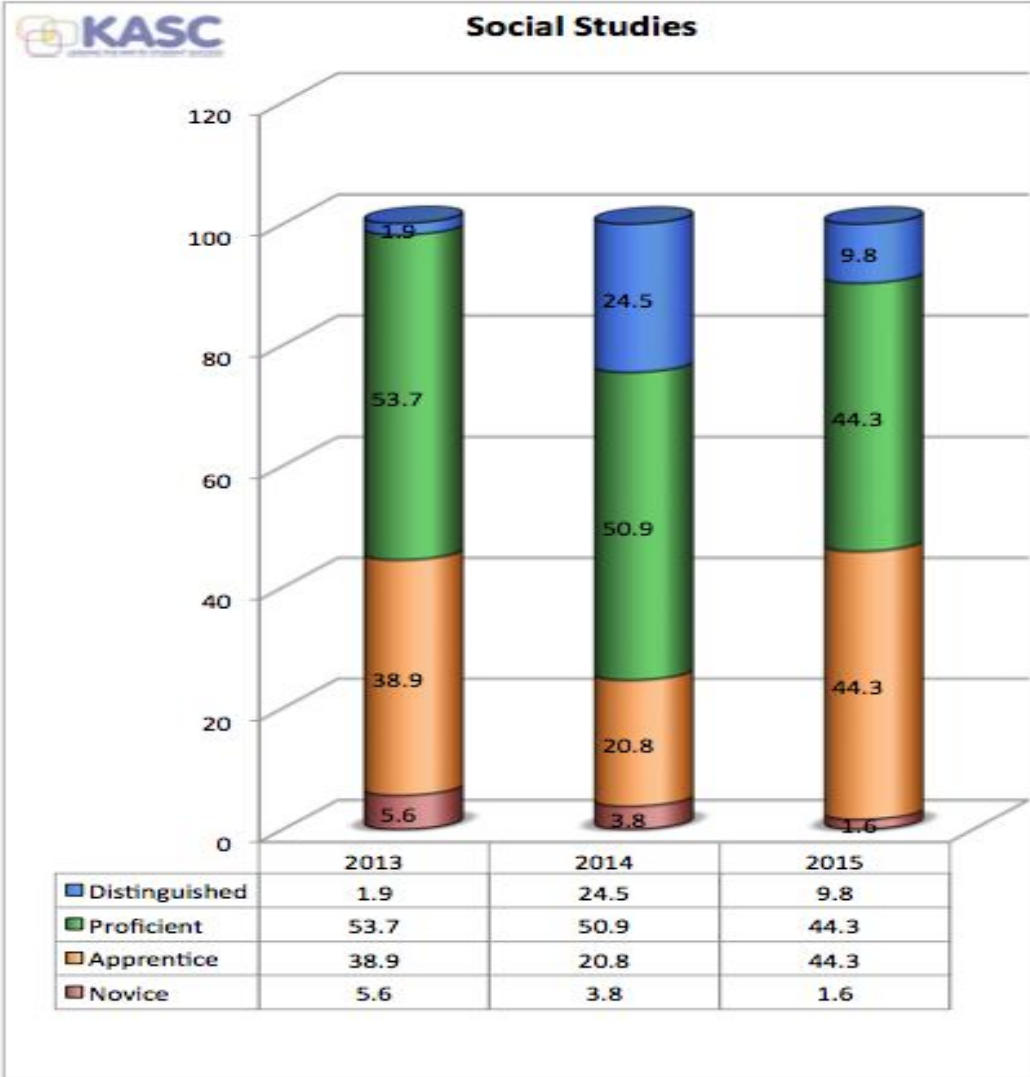
Distinguished	11.7	18.3	13.2
Proficient	38.7	37.2	41.7
Apprentice	27	29.9	28.5
Novice	22.7	14.6	16.6

Math



Distinguished	3.7	3	6
Proficient	28.8	28.7	31.1
Apprentice	39.9	45.1	41.7
Novice	27.6	23.2	21.2

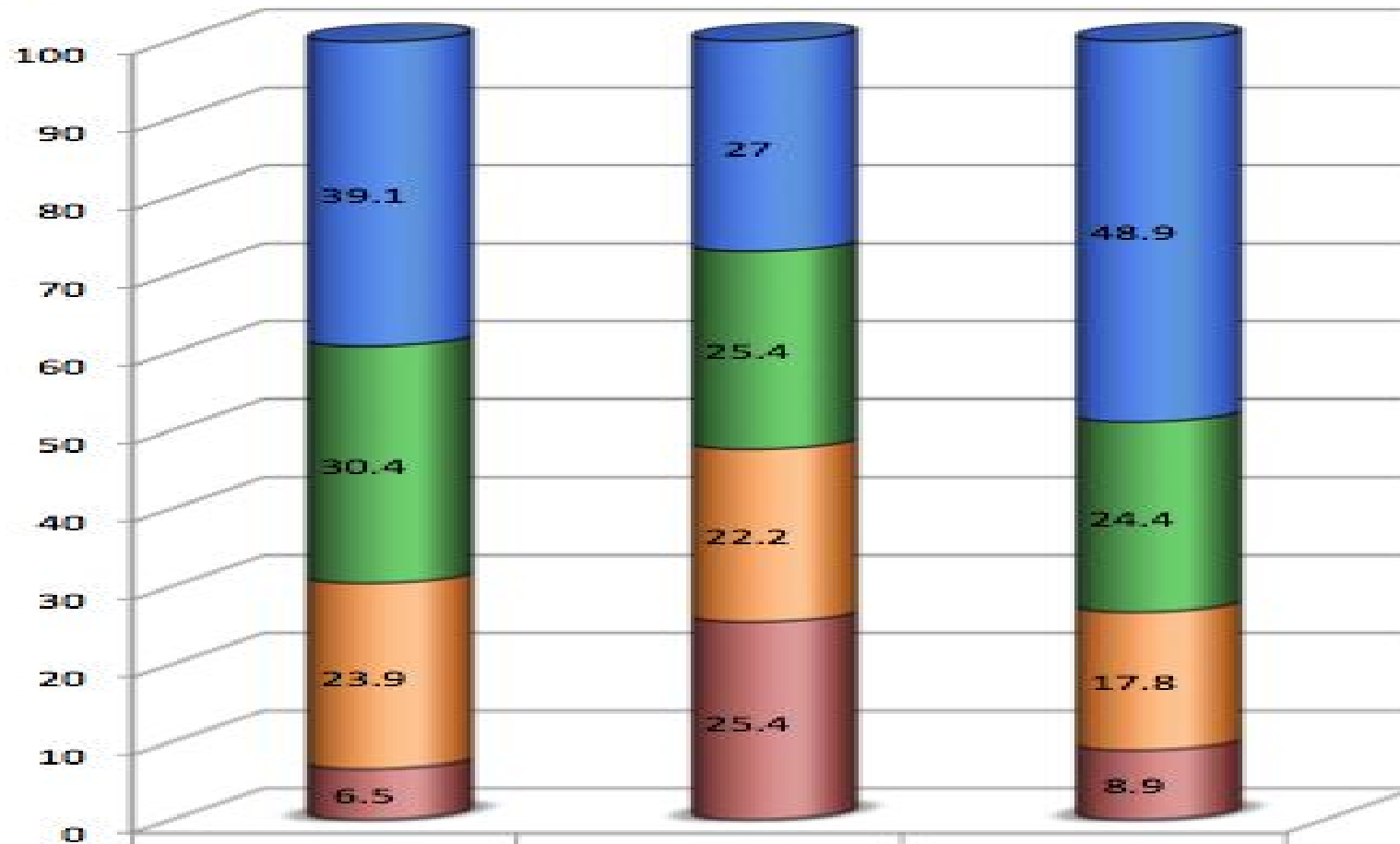
Learners Overview-Performance Level Percents



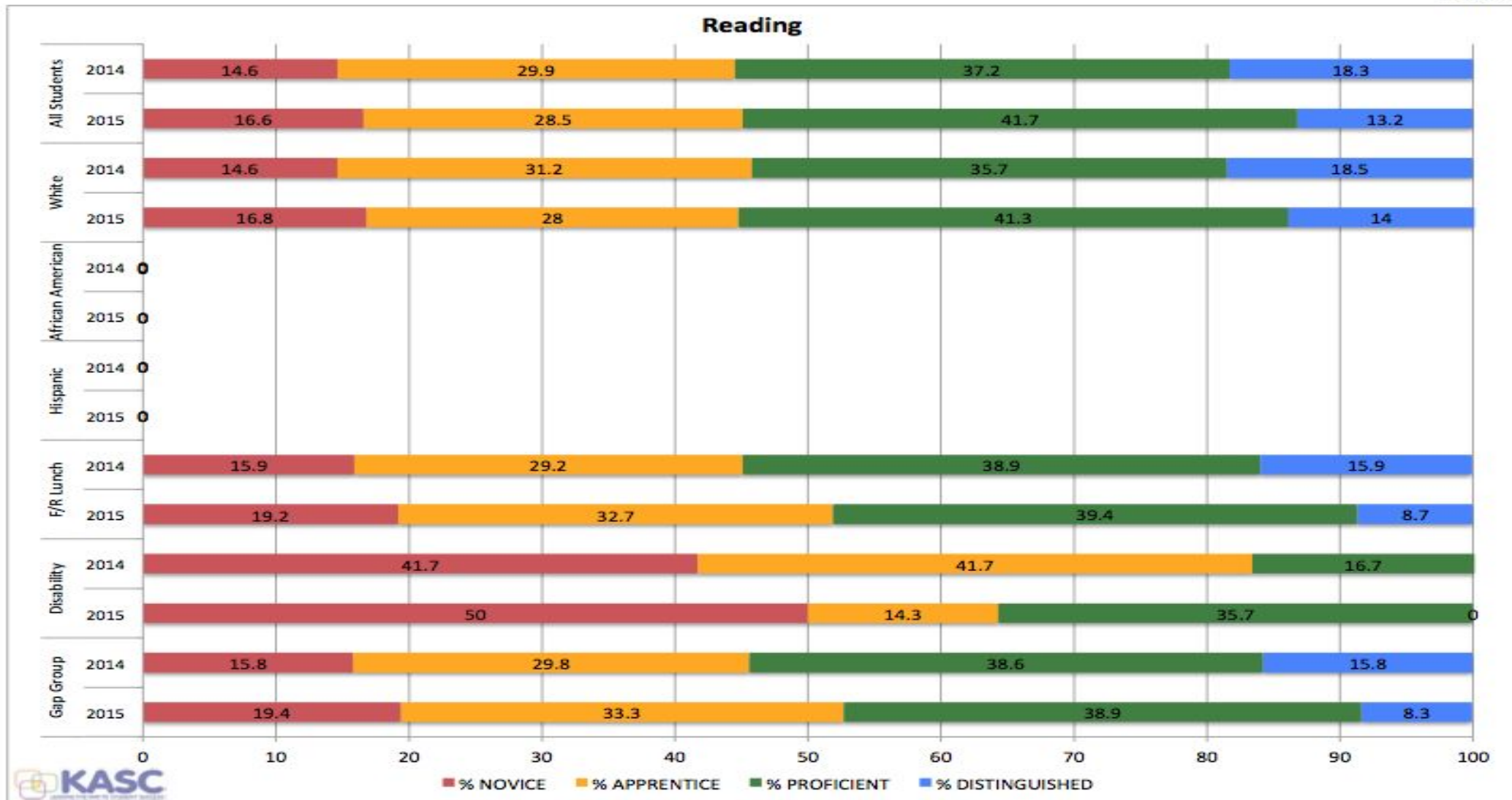
Learners Overview-Performance Level Percents

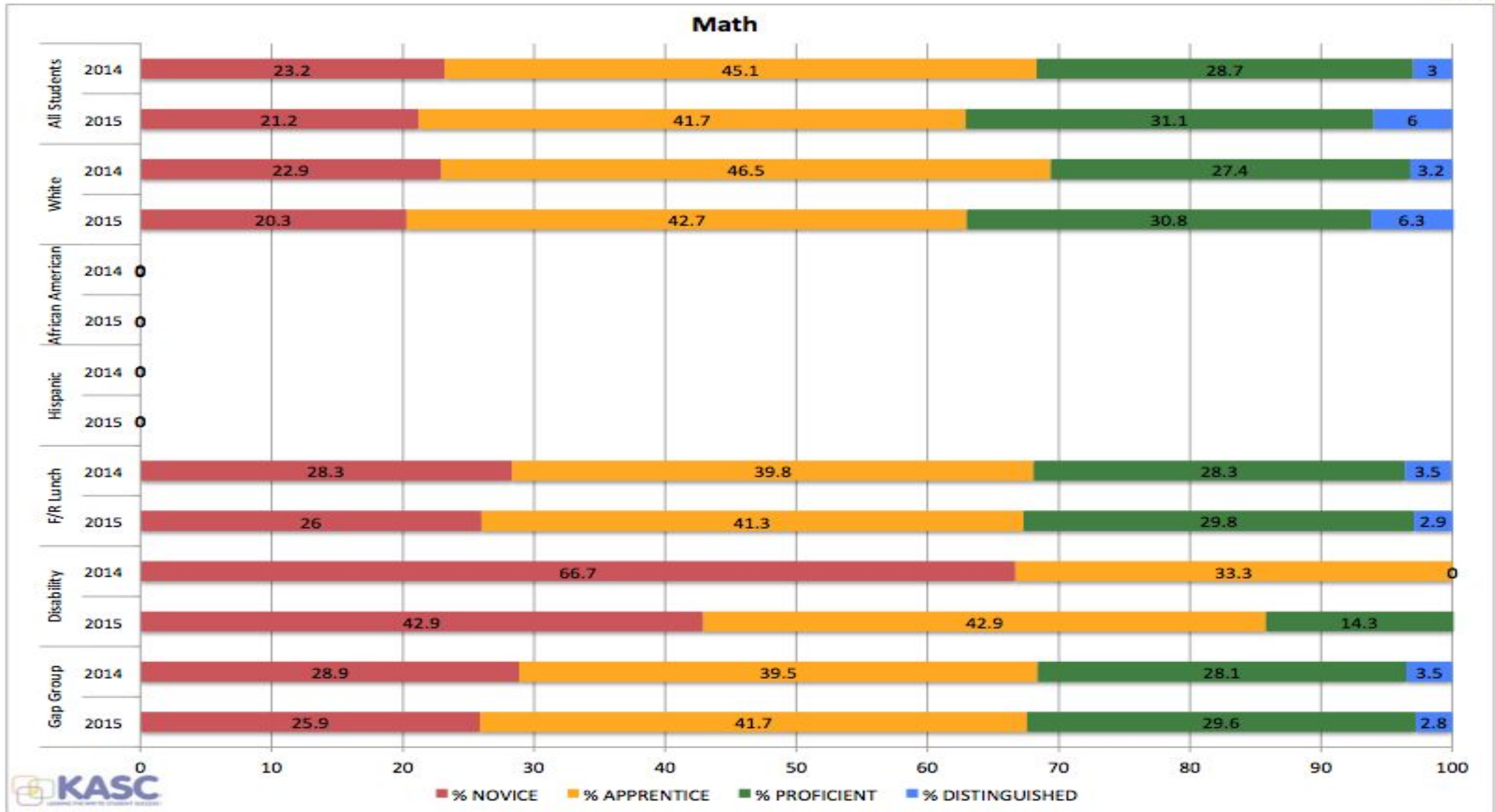


Language Mechanics



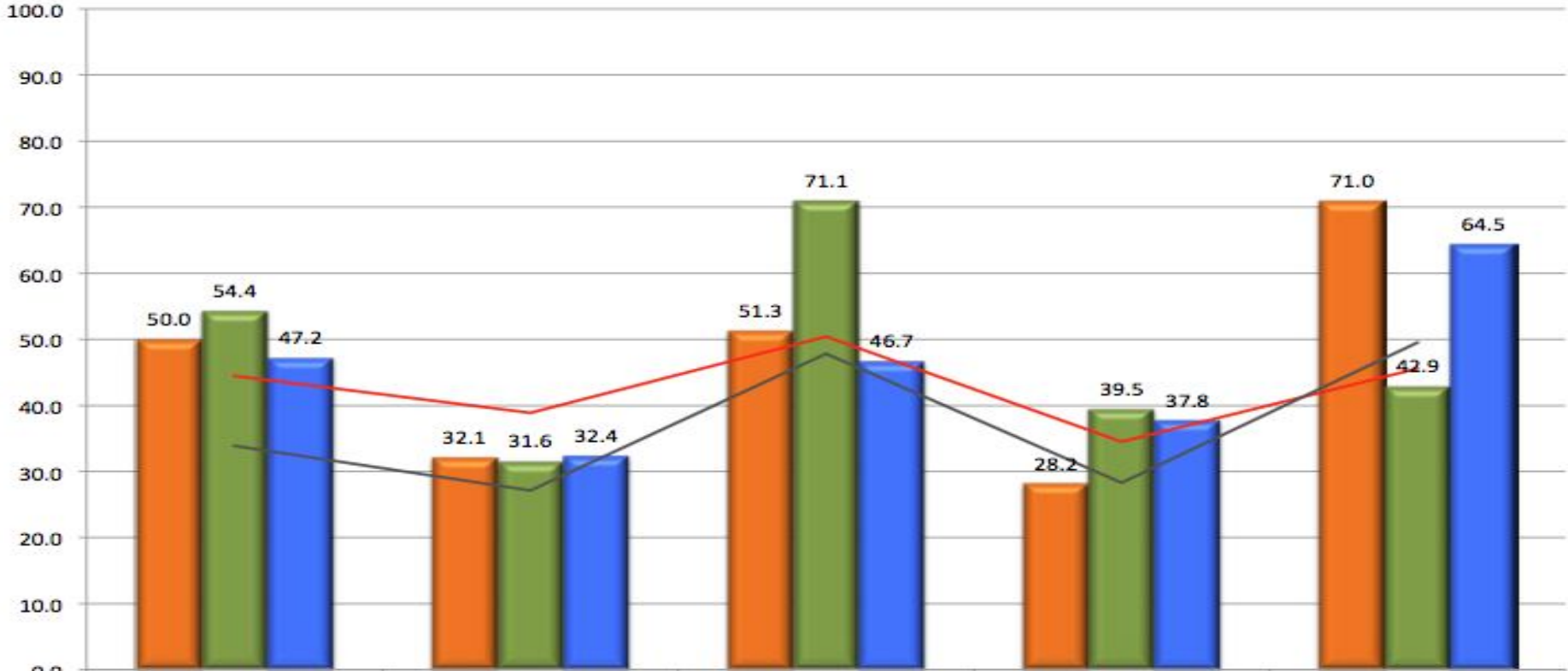
	2013	2014	2015
Distinguished	39.1	27	48.9
Proficient	30.4	25.4	24.4
Apprentice	23.9	22.2	17.8
Novice	6.5	25.4	8.9





Gap Points

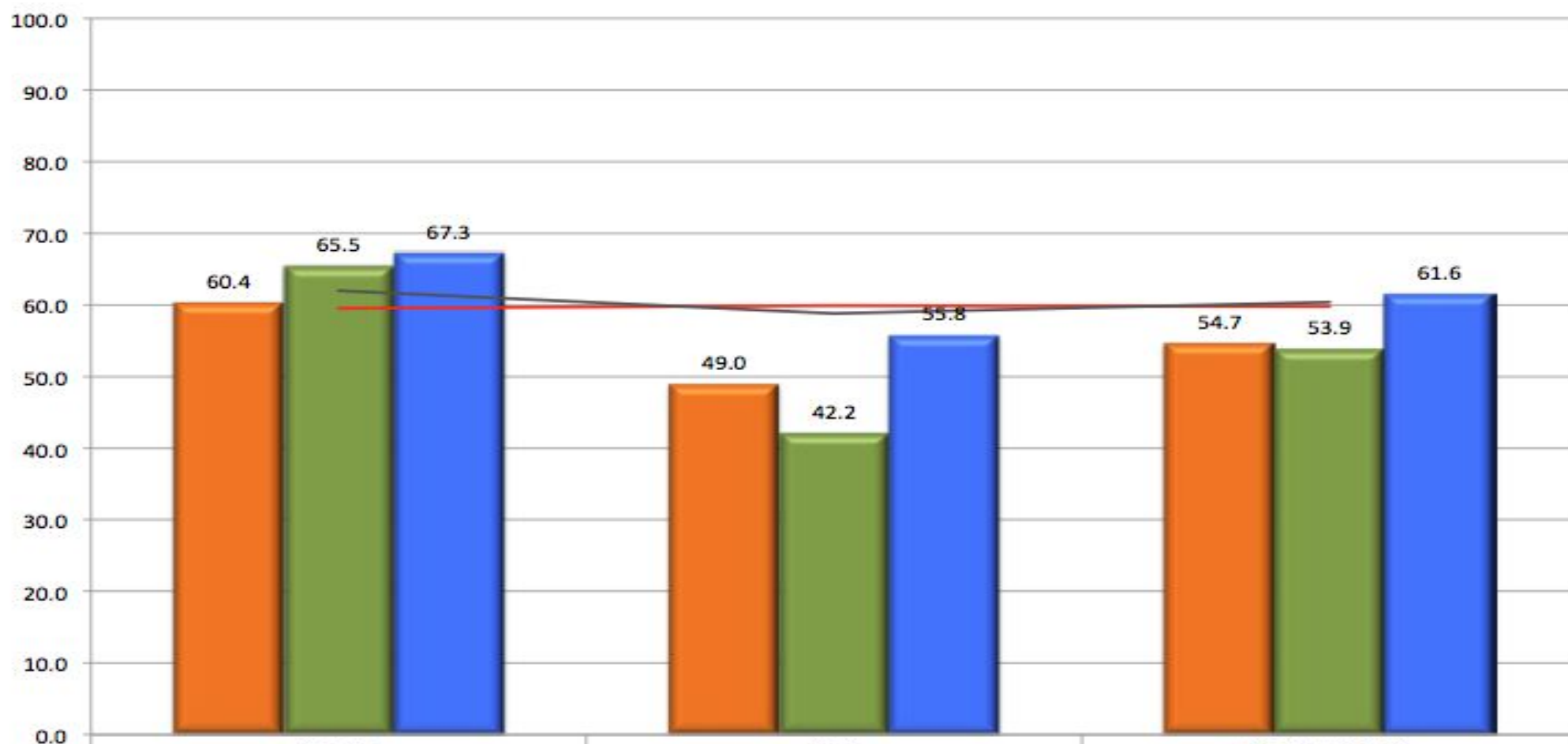
Gap NAPD Calculation



2013	50.0	32.1	51.3	28.2	71.0
2014	54.4	31.6	71.1	39.5	42.9
2015	47.2	32.4	46.7	37.8	64.5
2015 State	44.5	38.9	50.4	34.5	45.6
2015 District	33.9	27.1	47.8	28.3	49.5

Growth Points

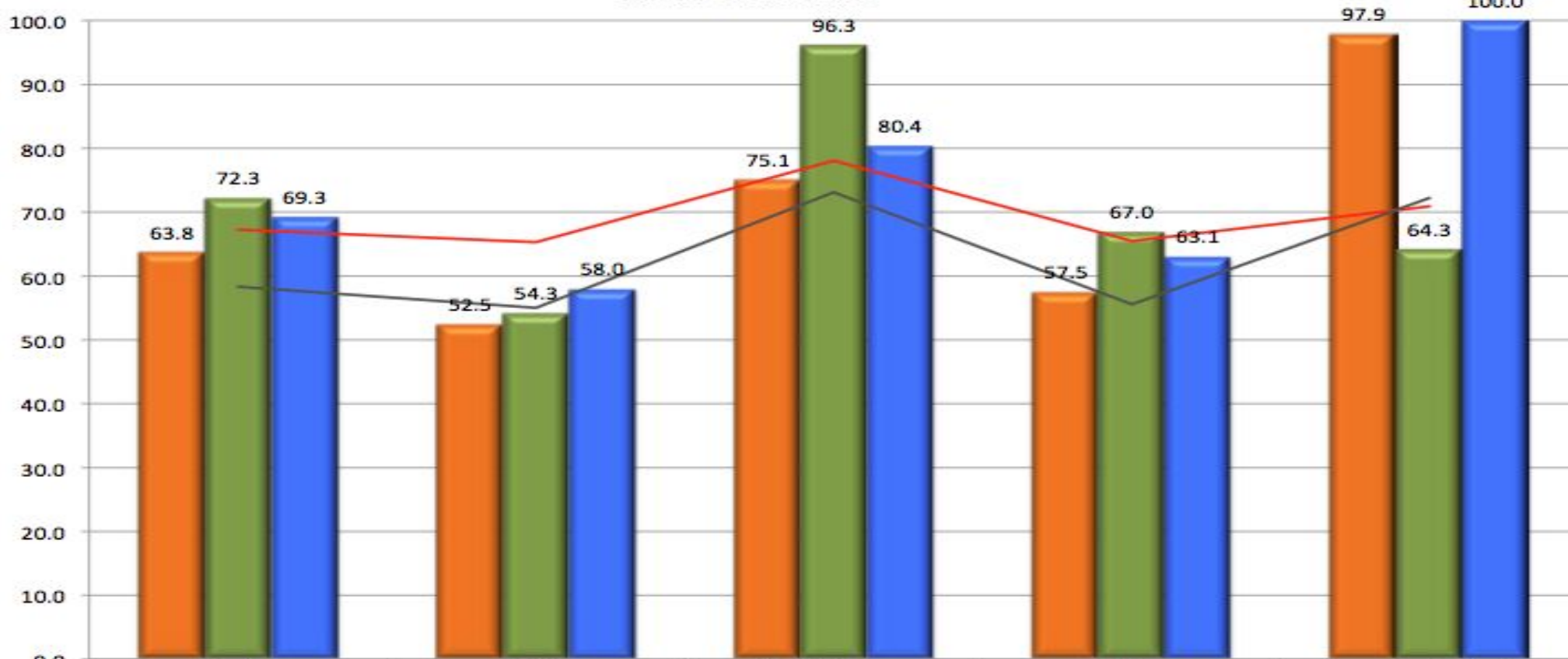
Growth



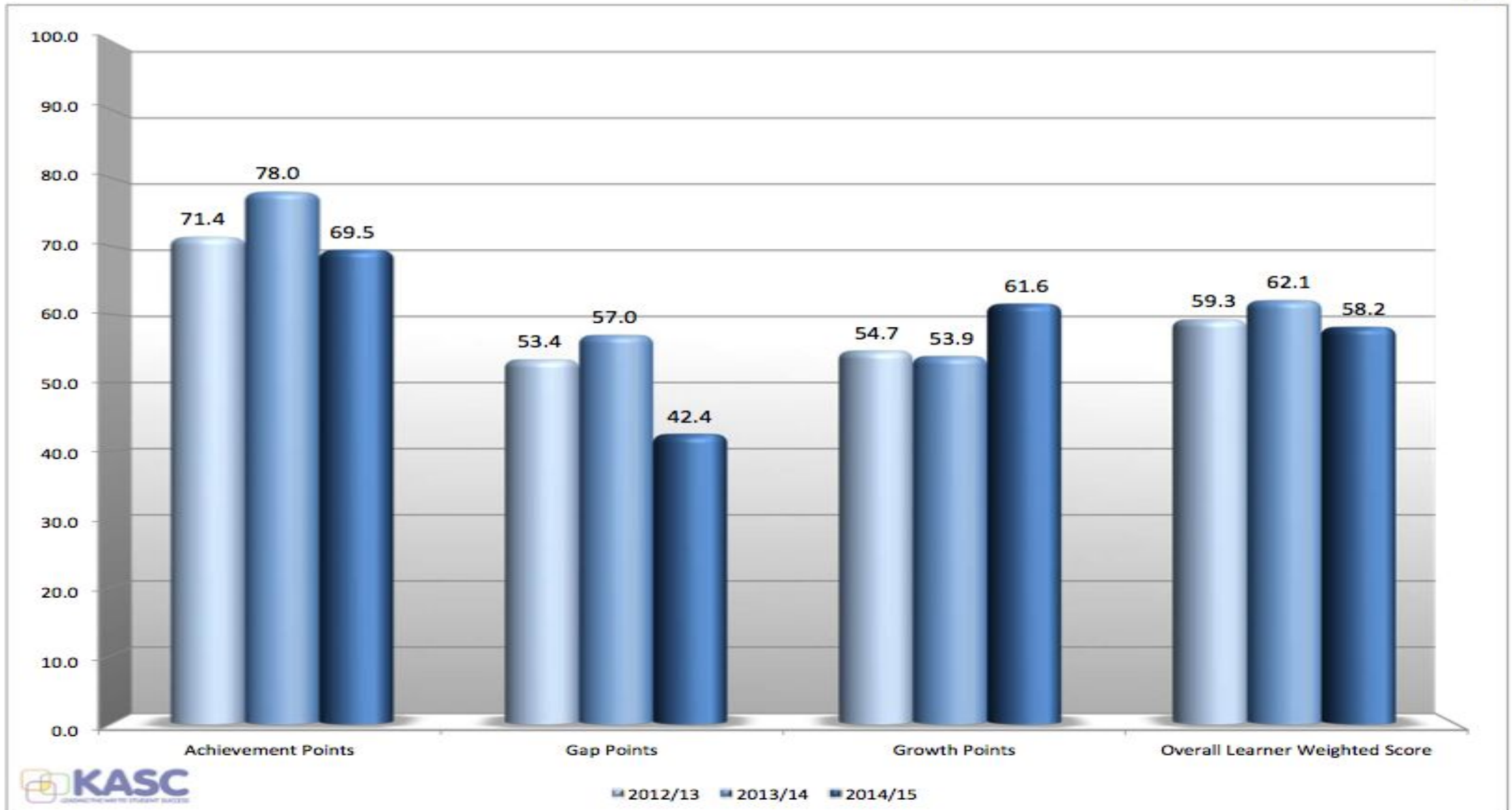
2013	60.4	49.0	54.7
2014	65.5	42.2	53.9
2015	67.3	55.8	61.6
2015 State	59.5	59.9	59.8
2015 District	62.0	58.8	60.4

Achievement Points

Achievement
NAPD Calculation



	Reading	Math	Social Studies	Writing	Language Mechanics
2013	63.8	52.5	75.1	57.5	97.9
2014	72.3	54.3	96.3	67.0	64.3
2015	69.3	58.0	80.4	63.1	100.0
2015 State	67.3	65.3	78.1	65.5	70.9
2015 District	58.3	55.0	73.1	55.6	72.2



Overview-School's Rank For The Past Three Years

	2012/13 Rank out of 720 Elem Schools	2013/14 Rank out of 720 Elem Schools	2014/15 Rank out of 712 Elem Schools
Overall	343	271	374
Reading	319	292	336
Math	568	610	537
Social Studies	401	100	322
Writing	399	254	408
Language Mechanics	71	404	1

